

Gaussian Solitary Waves in Granular Chains

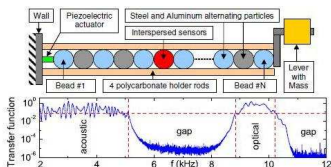
Dmitry Pelinovsky

Department of Mathematics, McMaster University, Canada

with R. Carles (Montpellier),
E. Dumas (Grenoble),
and G. James (Grenoble)

Department of Mathematics, University of Reading, 2 June 2015

Introduction



- ▶ Granular chains contain densely packed, elastically interacting particles with Hertzian contact forces.
- ▶ Recent works focus on solitary and periodic traveling waves in granular chains; as they are relevant to physical experiments.

On solitary travelling waves in granular chains

Existence of solitary waves was proved with the variational theory based on the differential–difference equation.

- ▶ G. Friesecke and J. Wattis, *Commun. Math. Phys.* **161** (1994), 391 - proof of existence for a general FPU lattice
- ▶ R. MacKay, *Phys. Lett. A* **251** (1999), 191 - adaptation of this method to granular chains
- ▶ J. English and R. Pego, *Proc. Amer. Math. Soc.* **133** (2005), 1763 - proof of the double-exponential tails of the solitary waves
- ▶ A. Stefanov and P. Kevrekidis, *J. Nonlinear Sci.* **22** (2012), 327 - proof of the bell-shaped profile of the solitary waves

The granular chain

$$x_{n-2}x_{n-1}x_n \quad x_{n+1}x_{n+2}$$



Newton's equations define the FPU (Fermi-Pasta-Ulam) lattice:

$$\frac{d^2 x_n}{dt^2} = V'(x_{n+1} - x_n) - V'(x_n - x_{n-1}), \quad n \in \mathbb{Z},$$

where x_n is the displacement of the n th particle.

The interaction potential for spherical beads is

$$V(x) = \frac{1}{1+\alpha} |x|^{1+\alpha} H(-x), \quad \alpha = \frac{3}{2},$$

where H is the step (Heaviside) function.

H. Hertz, *J. Reine Angewandte Mathematik* **92** (1882), 156

Travelling waves and the Boussinesq approximation

Using the relative displacements $u_n = x_n - x_{n-1}$ and applying the travelling wave reduction $u_n(t) = w_n(n - t)$, we obtain

$$\frac{d^2 w}{dz^2} = \Delta(w |w|^{\alpha-1}), \quad z \in \mathbb{R},$$

with $(\Delta w)(z) = w(z+1) - 2w(z) + w(z-1)$.

Expanding $\Delta = \partial_z^2 + \frac{1}{12}\partial_z^4$ and integrating twice, we obtain

$$w = w |w|^{\alpha-1} + \frac{1}{12} \frac{d^2}{dz^2} w |w|^{\alpha-1}, \quad z \in \mathbb{R},$$

which has compactons

$$w_c(z) = \begin{cases} A \cos^{\frac{2}{\alpha-1}}(Bz), & |z| \leq \frac{\pi}{2B}, \\ 0, & |z| \geq \frac{\pi}{2B}, \end{cases}$$

where

$$A = \left(\frac{1+\alpha}{2\alpha} \right)^{\frac{1}{1-\alpha}}, \quad B = \frac{\sqrt{3}(\alpha-1)}{\alpha}.$$

Ill-posedness of the Boussinesq equation

The fully nonlinear Boussinesq equation takes the form

$$u_{tt} = (u|u|^{\alpha-1})_{xx} + \frac{1}{12}(u|u|^{\alpha-1})_{xxxx},$$

V.F. Nesterenko, *J. Appl. Mech. Tech. Phys.* **24** (1983), 733

K. Ahnert and A. Pikovsky, *Phys. Rev. E* **79** (2009), 026209.

Cauchy problem for the Boussinesq equation is ill-posed.

Compare with the recent work on ill-posedness of degenerate dispersive equations:

D.M. Ambrose, G. Simpson, J.D. Wright, and D.G. Yang, *Nonlinearity* **25** (2012), 2655.

Korteweg–de Vries equation in the case of precompression

Consider again the FPU lattice

$$\frac{d^2 u_n}{dt^2} = V'(u_{n+1}) - 2V'(u_n) + V'(u_{n-1}), \quad n \in \mathbb{Z}.$$

If $V \in C^3$ with $V''(0) = \kappa > 0$ and $V'''(0) \neq 0$, then the asymptotic multi-scale expansion

$$u_n(t) = \kappa(4V'''(0))^{-1} \varepsilon^2 y(\xi, \tau) + \text{higher order terms},$$

where $\xi := \varepsilon(n - c_s t)$, $\tau := \varepsilon^3 c_s t/24$, and $c_s := \sqrt{\kappa}$ is the “sound velocity” of linear waves, shows that y satisfies the KdV equation

$$\partial_\tau y + 3y \partial_\xi y + \partial_\xi^3 y = 0.$$

The KdV equation admits the solitary waves $y = \operatorname{sech}^2((\xi - \tau)/2)$.

Relevant results

- ▶ The KdV equation can be justified at a time scale of order ε^{-3} .
G. Schneider and C.E. Wayne, *International Conference on Differential Equations Appl.* **5** (1998) 69
D. Bambusi, A. Ponno, *Comm. Math. Phys.* **264** (2006), 539
- ▶ Nonlinear stability of small amplitude FPU solitons can be proved.
G. Friesecke and R.L. Pego, *Nonlinearity* **12** (1999), 1601; **15** (2002), 1343; **17** (2004), 207; **17** (2004), 229.
- ▶ Existence and stability of N -soliton solutions can be proved.
A. Hoffman and C.E. Wayne, *Nonlinearity* **21** (2008), 2911;
J. Dyn. Diff. Equat. **21** (2009), 343.
T. Mizumachi, *Commun. Math. Phys.* **288** (2009), 125; *SIMA* **43** (2011), 2170; *Arch. Rat. Mech. Anal.* **207** (2013), 393.

Korteweg–de Vries equation without precompression

Consider again the FPU lattice

$$\left(\frac{d^2}{dt^2} - \Delta \right) u_n = \Delta f_\alpha(u_n), \quad n \in \mathbb{Z},$$

where

$$f_\alpha(u) := u(|u|^{\alpha-1} - 1) = (\alpha - 1) u \ln |u| + O((\alpha - 1)^2),$$

as $\alpha \rightarrow 1$. For the chains of hollow spherical particles of different width, α is defined in the range $1.1 \leq \alpha \leq 1.5$.

Let $\alpha = 1 + \varepsilon^2$. Using the asymptotic multi-scale expansion

$$u_n(t) = v(\xi, \tau) + \text{higher order terms},$$

where $\xi := 2\sqrt{3}\varepsilon(n - t)$, $\tau := \sqrt{3}\varepsilon^3 t$, we obtain the KdV equation with the logarithmic nonlinearity (log-KdV)

$$\partial_\tau v + \partial_\xi(v \log v) + \partial_\xi^3 v = 0.$$

Stationary solutions

Stationary log-KdV equation can be integrated once to get

$$\frac{d^2 v}{d\xi^2} + v \ln |v| = 0,$$

which admits the Gaussian solitons

$$v(\xi) = \sqrt{e} e^{-\xi^2/4}.$$

A. Chatterjee, PRE **59** (1999), 5912

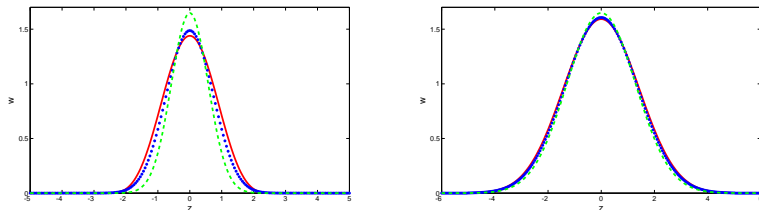


Figure : Solitary waves (blue) in comparison with the compactons (red) and the Gaussian solitons (green) for $\alpha = 1.5$ (left) and $\alpha = 1.1$ (right).

Numerical evidence of convergence of the approximation

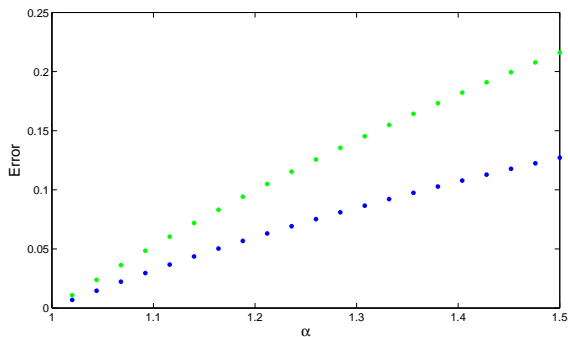


Figure : The L^∞ distance between solitary waves of the FPU chain and either Nesterenko compactons (blue dots) or Gaussian solitons (green dots) vs. α .

Numerical evidence of stability

Lattice of $N = 2000$ particles is excited with the initial impact

$$\dot{x}_n(0) = 0.1\delta_{n,0}, \quad \dot{x}_n(0) = 0 \text{ for all } n \geq 1.$$

A Gaussian solitary wave is formed asymptotically as t evolves.

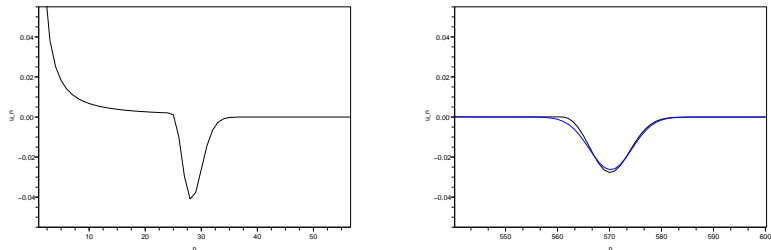


Figure : Formation of a Gaussian wave (blue curve) in the Hertzian FPU lattice with $\alpha = 1.01$: $t \approx 30.5$ (left) and $t \approx 585.6$ (right).

Summary of main results

The log-KdV equation

$$\partial_\tau v + \partial_\xi(v \log v) + \partial_\xi^3 v = 0.$$

1. Gaussian solitary wave is linearly orbitally stable in space $H^1(\mathbb{R})$.
2. For any initial data v_0 from the energy space $X \subset H^1(\mathbb{R})$, there exists a global solution $v \in L^\infty(\mathbb{R}, X)$ s.t. the energy is not increasing in time. Uniqueness is not proved.
3. The spectrum of the linearized operator in $L^2(\mathbb{R})$ is purely discrete and consists of a double zero eigenvalue and a symmetric sequence of simple purely imaginary eigenvalues $\{\pm i\omega_n\}_{n \in \mathbb{N}}$ s.t. $0 < \omega_1 < \omega_2 < \dots$ and $\omega_n \rightarrow \infty$ as $n \rightarrow \infty$. The eigenfunctions decay algebraically as $|\xi| \rightarrow \infty$.
4. The log-KdV equation is justified as a valid approximation for the FPU lattices for solutions v bounded away from zero.

Energy functional

The log-KdV equation

$$\partial_\tau v + \partial_\xi(v \log v) + \partial_\xi^3 v = 0.$$

can be written in the Hamiltonian form

$$\partial_\tau v = \partial_\xi E'(v),$$

where the energy functional is

$$E(v) = \frac{1}{2} \int_{\mathbb{R}} \left[(\partial_\xi v)^2 - v^2 \left(\log v - \frac{1}{2} \right) \right] d\xi.$$

Gaussian wave $v_0 = e^{\frac{2-\xi^2}{4}}$ is a critical point of $E(v)$: $E'(v_0) = 0$, and

$$L = E''(v_0) = -\partial_\xi^2 - 1 - \log(v_0) = -\frac{\partial^2}{\partial \xi^2} - \frac{3}{2} + \frac{\xi^2}{4}.$$

Linear operators and evolution

Theorem 1 (G.James, D.P., 2014)

v_0 is linearly orbitally stable in space $H^1(\mathbb{R})$.

Consider the time evolution of the perturbation u to v_0 :

$$\partial_\tau u = \partial_\xi L u, \quad u(0) = u_0.$$

The solitary wave is linearly orbitally stable if for every $u_0 \in \text{Dom}(\partial_x L)$ such that $\langle v_0, u_0 \rangle_{L^2} = 0$ there exists constant $C(u_0)$ such that

$$\|u(\tau)\|_{H^1} \leq C(u_0), \quad \tau \in \mathbb{R}.$$

The operator L is self-adjoint in $L^2(\mathbb{R})$ with domain

$$\text{Dom}(L) = \{ u \in H^2(\mathbb{R}), \xi^2 u \in L^2(\mathbb{R}) \}.$$

The spectrum of L consists of simple eigenvalues at $n - 1$, $n \in \mathbb{N}_0$.

Symplectic decomposition

We know that $\partial_\xi L$ has a double zero eigenvalue because

$$Lv'_0 = 0, \quad \partial_\xi L v_0 = -v'_0,$$

and no $u \in \text{Dom}(\partial_\xi L)$ exists in $\partial_\xi Lu = v_0$ because $\|v_0\|_2^2 \neq 0$.

Using the decomposition

$$u(\xi, \tau) = a(\tau) v'_0(\xi) + b(\tau) v_0(\xi) + y(\xi, \tau)$$

with $\langle v_0, y \rangle_{L^2} = 0$ and $\langle \partial_\xi^{-1} v_0, y \rangle_{L^2} = 0$, we obtain

$$\frac{da}{d\tau} + b = 0, \quad \frac{db}{d\tau} = 0, \quad \frac{\partial y}{\partial \tau} = \partial_\xi L y.$$

If $\langle v_0, u_0 \rangle_{L^2} = 0$, then $b(\tau) = b(0) = 0$ and $a(\tau) = a(0)$.

Proof of linear orbital stability

Because v_0 and v_0' are eigenvectors of L for the negative and zero eigenvalues, L is strictly positive definite on $v_0^\perp \cap v_0'^\perp \subset L^2(\mathbb{R})$.

As a result, $\|y\|_L = \langle Ly, y \rangle_{L^2}^{1/2}$ defines a norm (equivalent to a weighted H^1 -norm).

From the energy balance,

$$\frac{d}{d\tau} \frac{1}{2} \|y\|_L^2 = \langle Ly, \partial_\tau y \rangle_{L^2} = \langle Ly, \partial_\xi Ly \rangle_{L^2} = 0,$$

we obtain the Lyapunov stability of the zero equilibrium $y = 0$ in the constrained space $\langle v_0, y \rangle_{L^2} = 0$ and $\langle \partial_\xi^{-1} v_0, y \rangle_{L^2} = 0$.

The constrained space corresponds to the modulation of the two parameters of the Gaussian solitary wave.

Global existence of solutions

The log-KdV equation

$$\partial_\tau v + \partial_\xi(v \log v) + \partial_\xi^3 v = 0$$

has the associated energy functional

$$E(v) = \frac{1}{2} \int_{\mathbb{R}} \left[(\partial_\xi v)^2 - v^2 \left(\log v - \frac{1}{2} \right) \right] d\xi,$$

defined in the function space

$$X := \{v \in H^1(\mathbb{R}) : v^2 \log |v| \in L^1(\mathbb{R})\}.$$

Theorem 2 (R. Carles, D.P., 2014)

For any $v_0 \in X$, there exists a global solution $v \in L^\infty(\mathbb{R}, X)$ of the log-KdV equation such that

$$\|v(\tau)\|_{L^2} \leq \|v_0\|_{L^2}, \quad E(v(\tau)) \leq E(v_0), \quad \text{for all } \tau \in \mathbb{R}.$$

Proof of global existence

1. Construct an approximation of the logarithmic nonlinearity (Cazenave, 1980):

$$f_\varepsilon(v) = \begin{cases} v \log(v), & |v| \geq \varepsilon, \\ (\log(\varepsilon) - \frac{3}{4})v + \frac{1}{\varepsilon^2}v^3 - \frac{1}{4\varepsilon^4}v^5, & |v| \leq \varepsilon, \end{cases}$$

hence $f_\varepsilon \in C^2(\mathbb{R})$ and $f_\varepsilon(v) \rightarrow v \log(v)$ as $\varepsilon \rightarrow 0$ for every $v \in \mathbb{R}$.

Proof of global existence

1. Construct an approximation of the logarithmic nonlinearity (Cazenave, 1980):

$$f_\varepsilon(v) = \begin{cases} v \log(v), & |v| \geq \varepsilon, \\ (\log(\varepsilon) - \frac{3}{4})v + \frac{1}{\varepsilon^2}v^3 - \frac{1}{4\varepsilon^4}v^5, & |v| \leq \varepsilon, \end{cases}$$

hence $f_\varepsilon \in C^2(\mathbb{R})$ and $f_\varepsilon(v) \rightarrow v \log(v)$ as $\varepsilon \rightarrow 0$ for every $v \in \mathbb{R}$.

2. Obtain existence of the global approximating solutions $v^\varepsilon \in C(\mathbb{R}, H^1(\mathbb{R}))$ of the generalized KdV equations

$$\begin{cases} v_\tau^\varepsilon + v_{\xi\xi\xi}^\varepsilon + f'_\varepsilon(v^\varepsilon)v_\xi^\varepsilon = 0, & \tau > 0, \\ v^\varepsilon|_{\tau=0} = v_0. \end{cases}$$

(Kenig, Ponce, Vega, 1991).

Proof of global existence

1. Construct an approximation of the logarithmic nonlinearity (Cazenave, 1980):

$$f_\varepsilon(v) = \begin{cases} v \log(v), & |v| \geq \varepsilon, \\ (\log(\varepsilon) - \frac{3}{4})v + \frac{1}{\varepsilon^2}v^3 - \frac{1}{4\varepsilon^4}v^5, & |v| \leq \varepsilon, \end{cases}$$

hence $f_\varepsilon \in C^2(\mathbb{R})$ and $f_\varepsilon(v) \rightarrow v \log(v)$ as $\varepsilon \rightarrow 0$ for every $v \in \mathbb{R}$.

2. Obtain existence of the global approximating solutions $v^\varepsilon \in C(\mathbb{R}, H^1(\mathbb{R}))$ of the generalized KdV equations

$$\begin{cases} v_\tau^\varepsilon + v_{\xi\xi\xi}^\varepsilon + f'_\varepsilon(v^\varepsilon)v_\xi^\varepsilon = 0, & \tau > 0, \\ v^\varepsilon|_{\tau=0} = v_0. \end{cases}$$

(Kenig, Ponce, Vega, 1991).

3. Obtain uniform estimates for all $\varepsilon > 0$ and $\tau \in \mathbb{R}$:

$$\|v^\varepsilon(\tau)\|_{H^1} + \|(v^\varepsilon(\tau))^2 \log(v^\varepsilon(\tau))\|_{L^1} \leq C(v_0).$$

Proof of global existence

1. Construct an approximation of the logarithmic nonlinearity (Cazenave, 1980):

$$f_\varepsilon(v) = \begin{cases} v \log(v), & |v| \geq \varepsilon, \\ (\log(\varepsilon) - \frac{3}{4})v + \frac{1}{\varepsilon^2}v^3 - \frac{1}{4\varepsilon^4}v^5, & |v| \leq \varepsilon, \end{cases}$$

hence $f_\varepsilon \in C^2(\mathbb{R})$ and $f_\varepsilon(v) \rightarrow v \log(v)$ as $\varepsilon \rightarrow 0$ for every $v \in \mathbb{R}$.

2. Obtain existence of the global approximating solutions $v^\varepsilon \in C(\mathbb{R}, H^1(\mathbb{R}))$ of the generalized KdV equations

$$\begin{cases} v_\tau^\varepsilon + v_{\xi\xi\xi}^\varepsilon + f'_\varepsilon(v^\varepsilon)v_\xi^\varepsilon = 0, & \tau > 0, \\ v^\varepsilon|_{\tau=0} = v_0. \end{cases}$$

(Kenig, Ponce, Vega, 1991).

3. Obtain uniform estimates for all $\varepsilon > 0$ and $\tau \in \mathbb{R}$:

$$\|v^\varepsilon(\tau)\|_{H^1} + \|(v^\varepsilon(\tau))^2 \log(v^\varepsilon(\tau))\|_{L^1} \leq C(v_0).$$

4. Pass to the limit $\varepsilon \rightarrow 0$ and obtain a global solution $v \in L^\infty(\mathbb{R}, X)$ of the log-KdV equation.

Uniqueness

Lemma: Assume that a solution $v \in L^\infty(\mathbb{R}, X)$ of the log-KdV equation satisfies the additional condition

$$(\log |v|)_\xi \in L^\infty([-\tau_0, \tau_0] \times \mathbb{R}).$$

Then, the solution v is unique for every $\tau \in (-\tau_0, \tau_0)$, depends continuously on the initial data $v_0 \in X$, and satisfies $\|v(\tau)\|_{L^2} = \|v_0\|_{L^2}$ and $E(v(\tau)) = E(v_0)$ for all $\tau \in (-\tau_0, \tau_0)$.

Uniqueness

Lemma: Assume that a solution $v \in L^\infty(\mathbb{R}, X)$ of the log-KdV equation satisfies the additional condition

$$(\log |v|)_\xi \in L^\infty([-\tau_0, \tau_0] \times \mathbb{R}).$$

Then, the solution v is unique for every $\tau \in (-\tau_0, \tau_0)$, depends continuously on the initial data $v_0 \in X$, and satisfies $\|v(\tau)\|_{L^2} = \|v_0\|_{L^2}$ and $E(v(\tau)) = E(v_0)$ for all $\tau \in (-\tau_0, \tau_0)$.

- ▶ $\partial_\xi \log |v|$ is unbounded as $|\xi| \rightarrow \infty$ for the Gaussian solitary wave.
- ▶ Nonlinear orbital stability of Gaussian solitary wave is conditional that the global solution $v \in L^\infty(\mathbb{R}, X)$ is unique and depends continuously on the initial data $v_0 \in X$.

Spectral stability

If $v = V(\xi)e^{\lambda\tau}$, we arrive to the linear eigenvalue problem

$$\partial_\xi L V = \lambda V.$$

where we recall that $\sigma(L) = \{n-1, \quad n \in \mathbb{N}_0\}$ and the eigenfunctions of L have Gaussian decay in ξ .

Theorem 3 (R. Carles, D.P., 2014)

The spectrum of $\partial_x L$ in $L^2(\mathbb{R})$ is purely discrete and consists of a double zero eigenvalue and a symmetric sequence of simple purely imaginary eigenvalues $\{\pm i\omega_n\}_{n \in \mathbb{N}}$ such that $0 < \omega_1 < \omega_2 < \dots$ and $\omega_n \rightarrow \infty$ as $n \rightarrow \infty$. The eigenfunctions for nonzero eigenvalues are smooth in ξ but decay algebraically as $|\xi| \rightarrow \infty$.

Further remarks

- ▶ Because the spectrum of $\partial_x L$ is purely discrete, no asymptotic stability result can hold for Gaussian solitary waves.
- ▶ This agrees with the result of Cazenave for the log-NLS equation: the L^p norms at the solution v for any $p \geq 2$ including $p = \infty$ may not vanish as $t \rightarrow \infty$ (or in a finite time).

Further remarks

- ▶ Because the spectrum of $\partial_x L$ is purely discrete, no asymptotic stability result can hold for Gaussian solitary waves.
- ▶ This agrees with the result of Cazenave for the log-NLS equation: the L^p norms at the solution v for any $p \geq 2$ including $p = \infty$ may not vanish as $t \rightarrow \infty$ (or in a finite time).
- ▶ Nonlinear analysis of perturbations to the Gaussian solitary wave becomes now problematic. If $v(\xi, \tau) := v_0(\xi) + w(\xi, \tau)$ is set, then w satisfies

$$w_\tau = \partial_\xi L w - \partial_\xi N(w),$$

where

$$N(w) := w \log \left(1 + \frac{w}{v_0} \right) + v_0 \left[\log \left(1 + \frac{w}{v_0} \right) - \frac{w}{v_0} \right].$$

However, w/v_0 may grow like an inverse Gaussian function of ξ .

Proof of spectral stability

The linear eigenvalue problem

$$AV = \lambda V, \quad A := \partial_\xi L = -\partial_\xi^3 + \frac{1}{4}(\xi^2 - 6)\partial_\xi + \frac{1}{2}\xi,$$

can be written in the equivalent form with the Fourier transform

$$\hat{A}\hat{V} = \lambda\hat{V}, \quad \hat{A} = \frac{i}{4}k(-\partial_k^2 + 4k^2 - 6).$$

with the natural choice $\lambda = \frac{i}{4}E$.

Eigenfunctions of A are defined in the domain $X_A := D(A) \cap \dot{H}^{-1}(\mathbb{R})$,

$$D(A) = \left\{ u \in H^3(\mathbb{R}) : \xi^2 \partial_\xi u \in L^2(\mathbb{R}), \quad \xi u \in L^2(\mathbb{R}) \right\}.$$

In the Fourier form, the domain X_A becomes

$$\hat{X}_A = \left\{ \hat{u} \in H^1(\mathbb{R}) : k \partial_k^2 \hat{u} \in L^2(\mathbb{R}), \quad k^3 \hat{u} \in L^2(\mathbb{R}), \quad k^{-1} \hat{u} \in L^2(\mathbb{R}) \right\}.$$

Proof of spectral stability

The linear eigenvalue problem is

$$\frac{d^2 \hat{u}}{dk^2} + \left(\frac{E}{k} + 6 - 4k^2 \right) \hat{u}(k) = 0, \quad k \in \mathbb{R}.$$

- ▶ As $k \rightarrow 0$, two linearly independent solutions exist

$$\hat{u}_1(k) = k + O(k^2), \quad \hat{u}_2(k) = 1 + O(k \log(k)).$$

The second solution does not belong to \hat{X}_A .

- ▶ As $|k| \rightarrow \infty$, the decaying solution satisfies

$$\hat{u}(k) = ke^{-k^2} (1 + O(|k|^{-1})).$$

The shooting problem is over-determined.

Proof of spectral stability

- ▶ The way around is the weak piecewise definition of the eigenfunction:

$$\hat{u}(k) = \begin{cases} \hat{u}_+(k), & k > 0, \\ 0, & k < 0, \end{cases} \quad \text{or} \quad \hat{u}(k) = \begin{cases} 0, & k > 0, \\ \hat{u}_-(k), & k < 0, \end{cases}$$

where $\hat{u}_\pm(0) = 0$, so that $\hat{u} \in \hat{\mathcal{X}}_A$.

Proof of spectral stability

- ▶ The way around is the weak piecewise definition of the eigenfunction:

$$\hat{u}(k) = \begin{cases} \hat{u}_+(k), & k > 0, \\ 0, & k < 0, \end{cases} \quad \text{or} \quad \hat{u}(k) = \begin{cases} 0, & k > 0, \\ \hat{u}_-(k), & k < 0, \end{cases}$$

where $\hat{u}_\pm(0) = 0$, so that $\hat{u} \in \hat{X}_A$.

- ▶ For \hat{u}_+ , we set $\hat{u}_+(k) = k^{1/2}\hat{v}_+(k)$ and obtain

$$k^{1/2} \left(-\frac{d^2}{dk^2} + 4k^2 - 6 \right) k^{1/2} \hat{v}_+(k) = E \hat{v}_+(k), \quad k \in (0, \infty),$$

which is now in the symmetric form. Hence $E \in \mathbb{R}$.

Proof of spectral stability

- ▶ The way around is the weak piecewise definition of the eigenfunction:

$$\hat{u}(k) = \begin{cases} \hat{u}_+(k), & k > 0, \\ 0, & k < 0, \end{cases} \quad \text{or} \quad \hat{u}(k) = \begin{cases} 0, & k > 0, \\ \hat{u}_-(k), & k < 0, \end{cases}$$

where $\hat{u}_\pm(0) = 0$, so that $\hat{u} \in \hat{X}_A$.

- ▶ For \hat{u}_+ , we set $\hat{u}_+(k) = k^{1/2}\hat{v}_+(k)$ and obtain

$$k^{1/2} \left(-\frac{d^2}{dk^2} + 4k^2 - 6 \right) k^{1/2} \hat{v}_+(k) = E \hat{v}_+(k), \quad k \in (0, \infty),$$

which is now in the symmetric form. Hence $E \in \mathbb{R}$.

- ▶ For $E = 0$, we have $\hat{v}_+ = k^{1/2}e^{-k^2} > 0$ for $k > 0$. By Sturm's Theorem, the set of eigenvalues $\{E_n\}_{n \in \mathbb{N}_0}$ satisfies $0 = E_0 < E_1 < E_2 < \dots$ and $E_n \rightarrow \infty$ as $n \rightarrow \infty$.

Numerical illustration

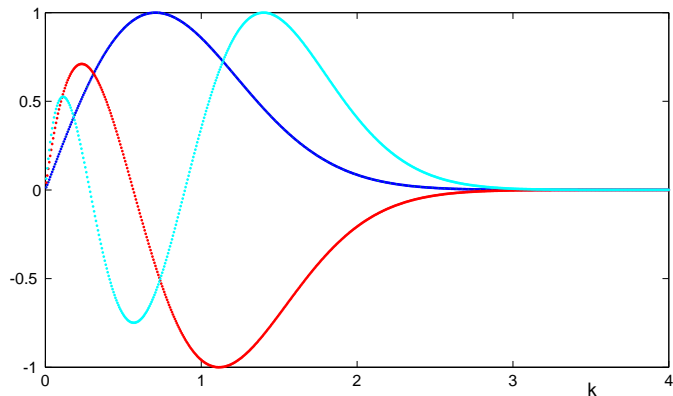


Figure : Eigenfunctions \hat{u} of the spectral problem versus k for the first three eigenvalues $E_0 = 0$, $E_1 \approx 5.411$, and $E_2 \approx 12.308$.

Precompression

Consider again the FPU lattice in the form

$$\frac{d^2 u_n}{dt^2} = -(\Delta |u|^{1+\varepsilon^2} H(-u))_n, \quad n \in \mathbb{Z}.$$

Let $u_n(t) = -1 - w_n(t)$, then $w_n(t)$ satisfies

$$\frac{d^2 w_n}{dt^2} = (\Delta V_\varepsilon(w))_n, \quad n \in \mathbb{Z}$$

with the regularized potential

$$V_\varepsilon(w) := \frac{1}{2 + \varepsilon^2} \left[(1 + w)^{2+\varepsilon^2} - 1 \right] - w, \quad w > -1$$

Precompression

Consider again the FPU lattice in the form

$$\frac{d^2 u_n}{dt^2} = -(\Delta |u|^{1+\varepsilon^2} H(-u))_n, \quad n \in \mathbb{Z}.$$

Let $u_n(t) = -1 - w_n(t)$, then $w_n(t)$ satisfies

$$\frac{d^2 w_n}{dt^2} = (\Delta V_\varepsilon(w))_n, \quad n \in \mathbb{Z}$$

with the regularized potential

$$V_\varepsilon(w) := \frac{1}{2 + \varepsilon^2} \left[(1 + w)^{2+\varepsilon^2} - 1 \right] - w, \quad w > -1$$

The KdV scaling $w_n(t) \approx W(\xi, \tau)$ with $\xi := \varepsilon(n - t)$ and $\tau := \varepsilon^3 t$ yields the log-KdV equation

$$2\partial_\tau W + \frac{1}{12}\partial_\xi^3 W + \partial_\xi((1 + W)\log(1 + W)) = 0.$$

Traveling waves of the log-KdV equation

Traveling waves $W(\xi - \lambda\tau/2)$ satisfy the stationary log-KdV equation

$$\lambda W(x) = \frac{1}{12} W''(x) + (1 + W) \log(1 + W), \quad x \in \mathbb{R},$$

where $(1 + W) \log(1 + W) = W + W^2/2 + O(W^3)$.

Traveling waves of the log-KdV equation

Traveling waves $W(\xi - \lambda\tau/2)$ satisfy the stationary log-KdV equation

$$\lambda W(x) = \frac{1}{12} W''(x) + (1 + W) \log(1 + W), \quad x \in \mathbb{R},$$

where $(1 + W) \log(1 + W) = W + W^2/2 + O(W^3)$.

For any $\lambda > 1$, there exists a unique even solution $W \in H^1(\mathbb{R})$ of the stationary log-KdV equation. Moreover,

- ▶ $W(x) > 0$ for all $x \in \mathbb{R}$,
- ▶ $W(x) \rightarrow 0$ as $|x| \rightarrow \infty$ exponentially fast,
- ▶ $W \in H^\infty(\mathbb{R})$,
- ▶ W' vanishes only at one point on \mathbb{R} .

Traveling waves of the log-KdV equation

Traveling waves $W(\xi - \lambda\tau/2)$ satisfy the stationary log-KdV equation

$$\lambda W(x) = \frac{1}{12} W''(x) + (1 + W) \log(1 + W), \quad x \in \mathbb{R},$$

where $(1 + W) \log(1 + W) = W + W^2/2 + O(W^3)$.

For any $\lambda > 1$, there exists a unique even solution $W \in H^1(\mathbb{R})$ of the stationary log-KdV equation. Moreover,

- ▶ $W(x) > 0$ for all $x \in \mathbb{R}$,
- ▶ $W(x) \rightarrow 0$ as $|x| \rightarrow \infty$ exponentially fast,
- ▶ $W \in H^\infty(\mathbb{R})$,
- ▶ W' vanishes only at one point on \mathbb{R} .

The travelling solitary wave is orbitally stable in the log-KdV equation
J. Höwing, J. Diff. Eqs. **251** (2011), 2515.

Main results

Theorem 4 (E.Dumas–D.P., 2014)

For every $\lambda > 1$, there exist positive constants ε_0 and C_0 s.t. for every $\varepsilon \in (0, \varepsilon_0)$, there exists a unique even travelling solution $w_{\text{stat},\varepsilon}$ of the FPU lattice in $L^2(\mathbb{R}) \cap L^\infty(\mathbb{R})$ s.t.

$$\sup_{z \in \mathbb{R}} |w_{\text{stat},\varepsilon}(z) - W_{\text{stat}}(\varepsilon z)| \leq C_0 \varepsilon^{1/6},$$

where W_{stat} is the unique even solution to the log–KdV equation.

Main results

Theorem 4 (E.Dumas–D.P., 2014)

For every $\lambda > 1$, there exist positive constants ε_0 and C_0 s.t. for every $\varepsilon \in (0, \varepsilon_0)$, there exists a unique even travelling solution $w_{\text{stat},\varepsilon}$ of the FPU lattice in $L^2(\mathbb{R}) \cap L^\infty(\mathbb{R})$ s.t.

$$\sup_{z \in \mathbb{R}} |w_{\text{stat},\varepsilon}(z) - W_{\text{stat}}(\varepsilon z)| \leq C_0 \varepsilon^{1/6},$$

where W_{stat} is the unique even solution to the log-KdV equation.

Remarks:

- ▶ Moreover, $w_{\text{stat},\varepsilon} \in H^\infty(\mathbb{R})$.
- ▶ Moreover, $w_{\text{stat},\varepsilon}$ decays to zero exponentially fast at infinity.
- ▶ We have no proof that $w_{\text{stat},\varepsilon}$ is positive.

Main results

Theorem 5 (E.Dumas–D.P., 2014)

For every $\tau_0 > 0$, there exist positive constants ε_0 , δ_0 and C_0 s.t. for all $\varepsilon \in (0, \varepsilon_0)$, when initial data $w_{\text{ini},\varepsilon} \in l^2(\mathbb{R})$ satisfy

$$\delta := \|w_{\text{ini},\varepsilon} - w_{\text{trav},\varepsilon}(0)\|_{l^2} \leq \delta_0,$$

then the unique solution w_ε to the FPU lattice belongs to $C^1([-\tau_0\varepsilon^{-3}, \tau_0\varepsilon^{-3}], l^2(\mathbb{Z}))$ and satisfies

$$\|w_\varepsilon(t) - w_{\text{trav},\varepsilon}(t)\|_{l^2} \leq C_0\delta, \quad t \in [-\tau_0\varepsilon^{-3}, \tau_0\varepsilon^{-3}].$$

Main results

Theorem 5 (E.Dumas–D.P., 2014)

For every $\tau_0 > 0$, there exist positive constants ε_0 , δ_0 and C_0 s.t. for all $\varepsilon \in (0, \varepsilon_0)$, when initial data $w_{\text{ini},\varepsilon} \in l^2(\mathbb{R})$ satisfy

$$\delta := \|w_{\text{ini},\varepsilon} - w_{\text{trav},\varepsilon}(0)\|_{l^2} \leq \delta_0,$$

then the unique solution w_ε to the FPU lattice belongs to $C^1([-\tau_0\varepsilon^{-3}, \tau_0\varepsilon^{-3}], l^2(\mathbb{Z}))$ and satisfies

$$\|w_\varepsilon(t) - w_{\text{trav},\varepsilon}(t)\|_{l^2} \leq C_0\delta, \quad t \in [-\tau_0\varepsilon^{-3}, \tau_0\varepsilon^{-3}].$$

Remarks:

- ▶ The travelling waves of the FPU lattice are stable w.r.t. modulations of any spatial scales, up to the time scale of $O(\varepsilon^{-3})$.
- ▶ The constant C_0 may grow exponentially fast in τ_0 .

Open questions:

- ▶ Convergence of the solitary wave in the FPU chain to the Gaussian wave in the log-KdV equation.
- ▶ Orbital stability of the Gaussian wave in the log-KdV equation.
- ▶ Development of numerical methods for the log-KdV equation.

Open questions:

- ▶ Convergence of the solitary wave in the FPU chain to the Gaussian wave in the log-KdV equation.
- ▶ Orbital stability of the Gaussian wave in the log-KdV equation.
- ▶ Development of numerical methods for the log-KdV equation.

References:

- ▶ G. James and D.E. Pelinovsky, Gaussian solitary waves and compactons in Fermi-Pasta-Ulam lattices with Hertzian potentials, *Proc. Roy. Soc. A* **470**, 20130465 (20 pages) (2014).
- ▶ R. Carles and D.E. Pelinovsky, On the orbital stability of Gaussian solitary waves in the log-KdV equation, *Nonlinearity* **27**, 3185–3202 (2014)
- ▶ E. Dumas and D.E. Pelinovsky, Justification of the log-KdV equation in granular chains : the case of precompression, *SIAM J. Math. Anal.* **46**, 4075–4103 (2014)